



16A Baldock Road, Hitchin, SG5 4NZ

£750,000

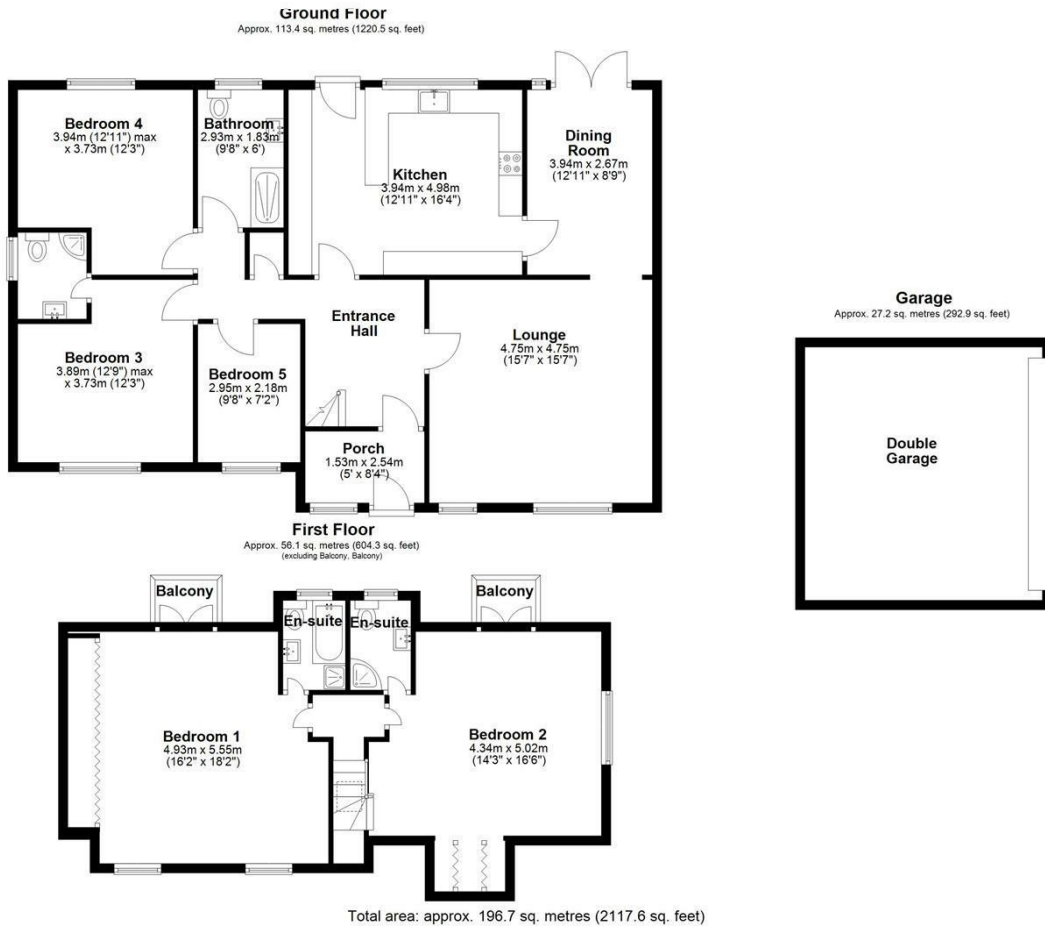
Located in Stotfold is this detached, five bedroom chalet bungalow with a garage.

Step inside into an inner porch with space to hang coats and bags, leading through to a bright and welcoming entrance hall. Off the hall is the lounge, a bright and inviting room with a feature fireplace at its centre. An archway leads through to the dining room, offering views out to the garden and plenty of space to entertain family and friends.

The kitchen is modern, with stylish anthracite handleless cabinets and quartz worktops. There is a Butler sink, five-ring gas hob, double eye-level ovens and an integrated dishwasher, as well as space for an American-style fridge freezer. The addition of a breakfast bar is ideal for informal dining or for those with young children.

There are three bedrooms on the ground floor. Bedroom three has fitted mirrored wardrobes and a handy en-suite shower room. Bedroom four is currently being utilised as a home office, while

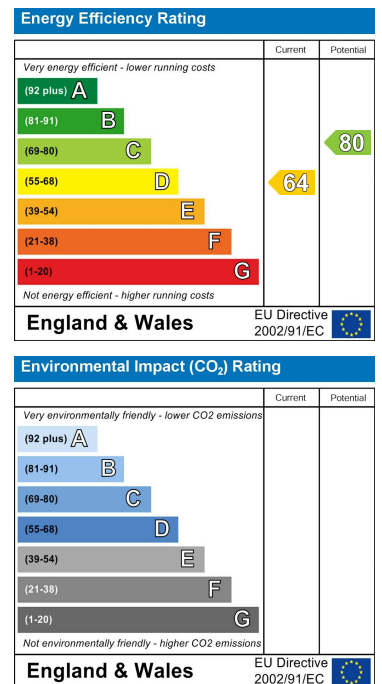
Floor Plan



Area Map



Energy Efficiency Graph



These particulars, whilst believed to be accurate are set out as a general outline only for guidance and do not constitute any part of an offer or contract. Intending purchasers should not rely on them as statements of representation of fact, but must satisfy themselves by inspection or otherwise as to their accuracy. No person in this firm's employment has the authority to make or give any representation or warranty in respect of the property.